

# 111 John Street

Nestled away from the hustle and bustle of Broadway, 111 John Street is a great space to work, especially with it being right near the South Street Seaport and a parking lot to boot. Views of the Brooklyn Bridge and Manhattan Bridge are a beautiful touch, and while the building traditionally hosted insurance related tenants, this is the up-and-coming place for all types of tenants including the future Omakase.



## Leasing Agent

Mendy Braun  
212-349-2154  
Mbraun@braunmgmt.com

## OWNER

**111 John Realty Corp.**

## MANAGING AGENT

**KF Braun Management LLC**

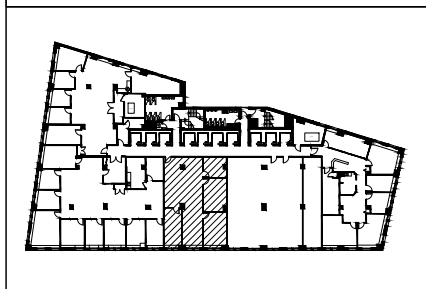
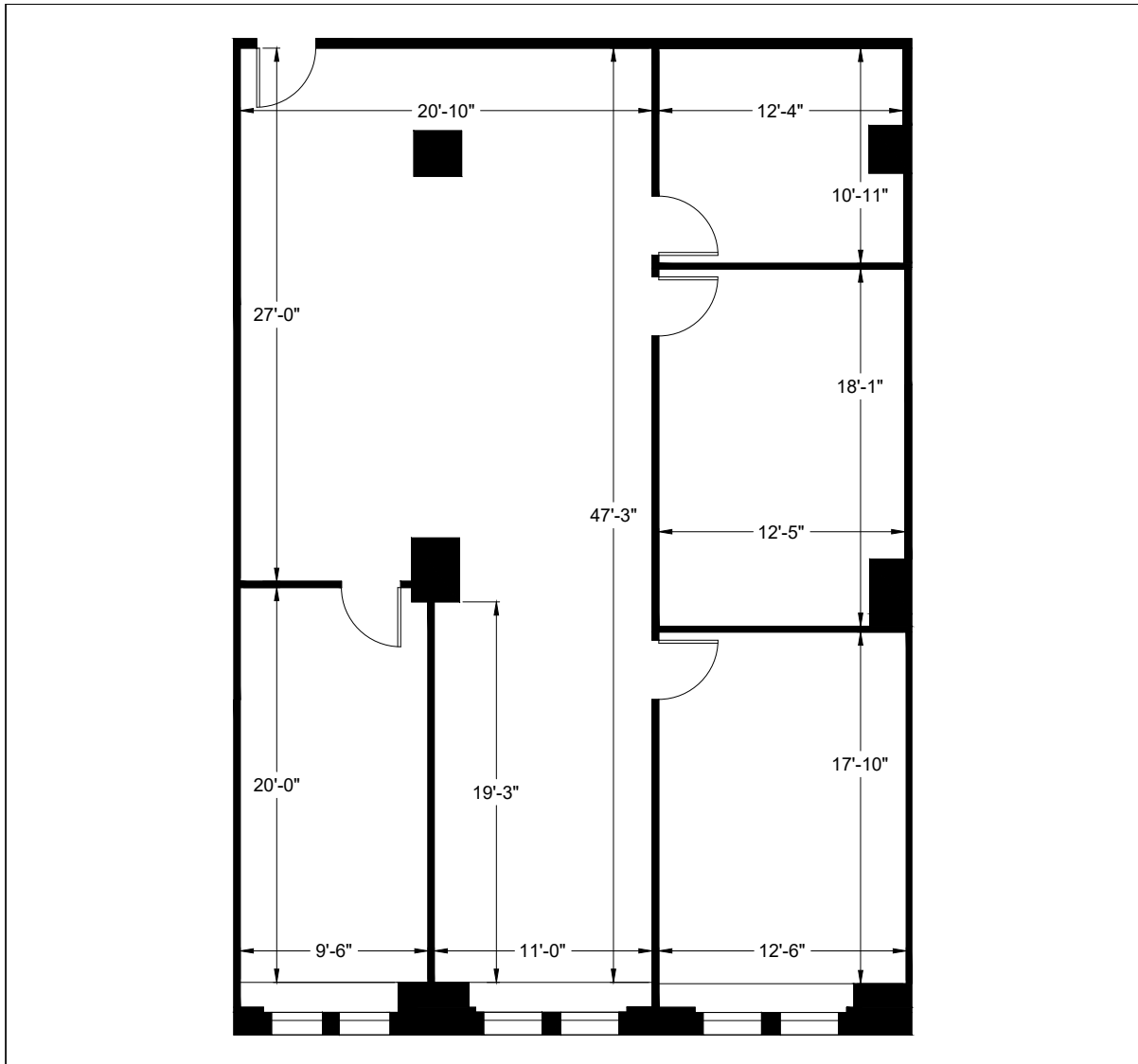
## LOBBY DESK

**212-267-3830**

## 06 Floor - Suite 630 111 JOHN ST

Suite	Sq. Ft.	Monthly Rent	Monthly Electricity	Electricity	Rent per Sq. Ft.
630	2,230	\$6,318		3.50	\$34

ESCALATION: 3% Per Annum In Lieu of Operating Expense. R.E. Tax Pass Along



**2-D**  
AS-BUILT  
FLOOR PLANS

2DFLOORPLANS.COM  
206-328-7410

600 NW Gilman Blvd. Suite E  
Issaquah, WA 98027

**111 JOHN STREET  
SUITE 630  
NEW YORK, N.Y.**

**KE | BRAUN  
MANAGEMENT LLC**