

225 Broadway

The Transportation Building

The very attractive building at 225 Broadway boasts a Renaissance Revival design, and where it is located is just as appealing. It sits adjacent to the Fulton Street Hub, is near City Hall and courts, and is located in a very popular and high-traffic area, perfect for any New York native. Enjoy nice views of City Hall and the Brooklyn Bridge as well as over the whole oculus. While it's chock full of old school charm, the building is equipped with a destination dispatch elevator allowing for a touchless and more efficient transportation experience.



KF | **BRAUN**
MANAGEMENT LLC

Leasing Agent

Mendy Braun
212-349-2154
Mbraun@braunmgmt.com

OWNER

Bowling Green Assocs., L.P.

MANAGING AGENT

KF Braun Management LLC

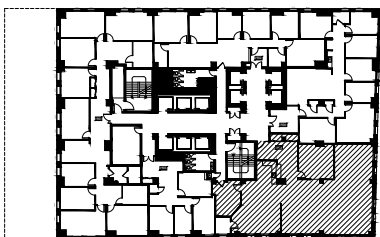
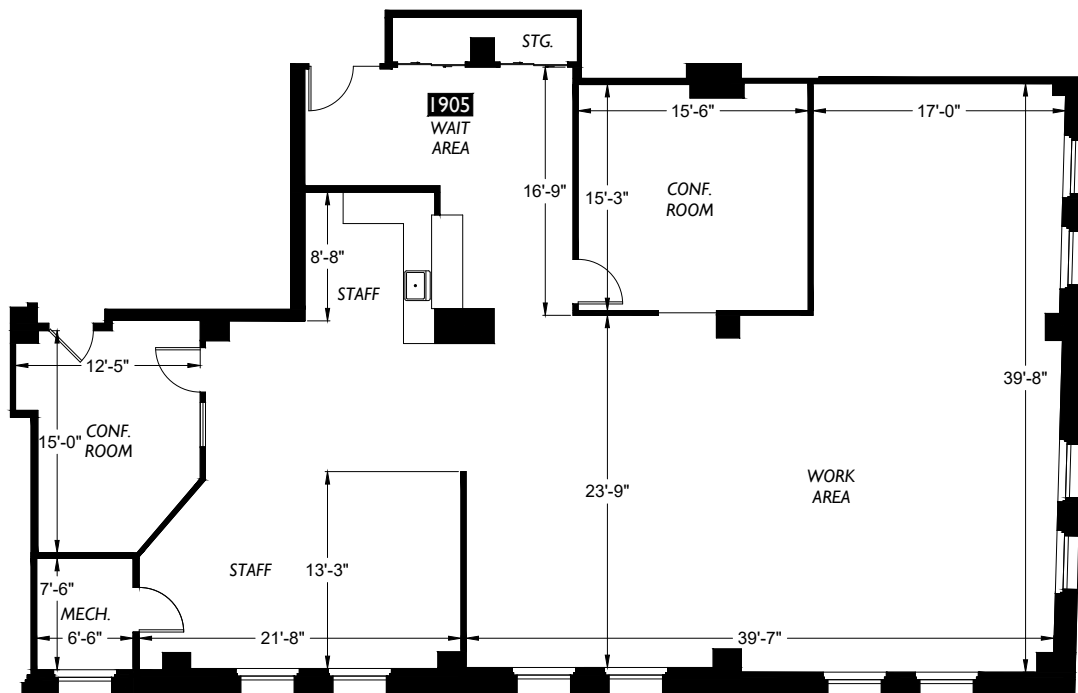
LOBBY DESK

212-227-8638

19 Floor - Suite 1905 225 BROADWAY

Suite	Sq. Ft.	Monthly Rent	Monthly Electricity	Electricity	Rent per Sq. Ft.
1905	3,510	\$13,163		3.50	\$45

ESCALATION: 3% Per Annum In Lieu of Operating Expense. R.E. Tax Pass Along



2DFLOORPLANS.COM
206-328-7410

600 NW Gilman Blvd. Suite E
Issaquah, WA 98027

**225 BROADWAY
SUITE 1905 NEW
YORK, N.Y.**



Mendy Braun

mendy@braunre.com
www.braunre.com

160 Broadway 1st Floor
New York, NY 10038
212.349.2154 P
212.202.6418 F